

SkyATA Quick Guide

Package Contents

- SkyATA – Skype USB Adapter
- Telephone RJ11 cable
- SkyATA Setup Wizard CD with SkyATA & Skype setup programs, user manual and quick guide. User can download latest SkyATA related document from Regin



Technology web site: <https://www.regintech.com.tw/download.htm>

Below link is SkyATA introduction YouTube and you can enable YouTube caption setting. <https://youtu.be/Hi9IImPM9cw>

Quick Installation Procedure

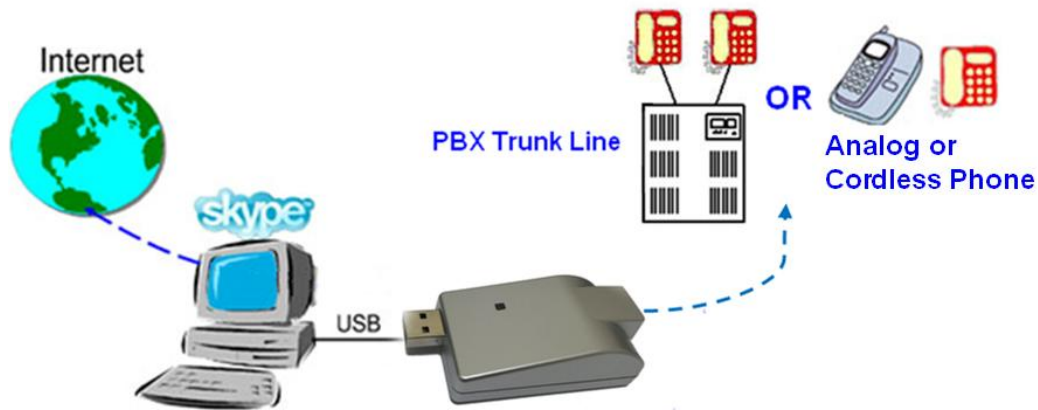
1. Make sure that your PC has internet access and running Skype 8.30.0.50 ~ 8.34.0.78 version.
2. Remove SkyATA dongle and setup wizard CD from SkyATA package.
3. Plug SkyATA dongle into your computer USB port.



LED Indicator:

Standby(Slow on/off)
Ringing(Fast on/off)
Call active(Always on)
Error(Always off)

4. Connect SkyATA RJ-11 port to a regular analog phone RJ-11 port or PBX trunk line through phone cable and make sure phone is on-hook properly.



Connect SkyATA with analog PBX trunk line or analog phone

5. Put SkyATA setup wizard CD into your computer CD ROM and double-click SkyATAsSetup program.
6. The “**Select Setup Language**” window pops up. Choose a preferred language by scrolling down the selection bar. After choosing the language, click OK.




7. The “**Welcome to the SkyATA Setup Wizard**” appears. Read the on-screen instructions and click Next. Continue to install until finish.



8. Important setting before start

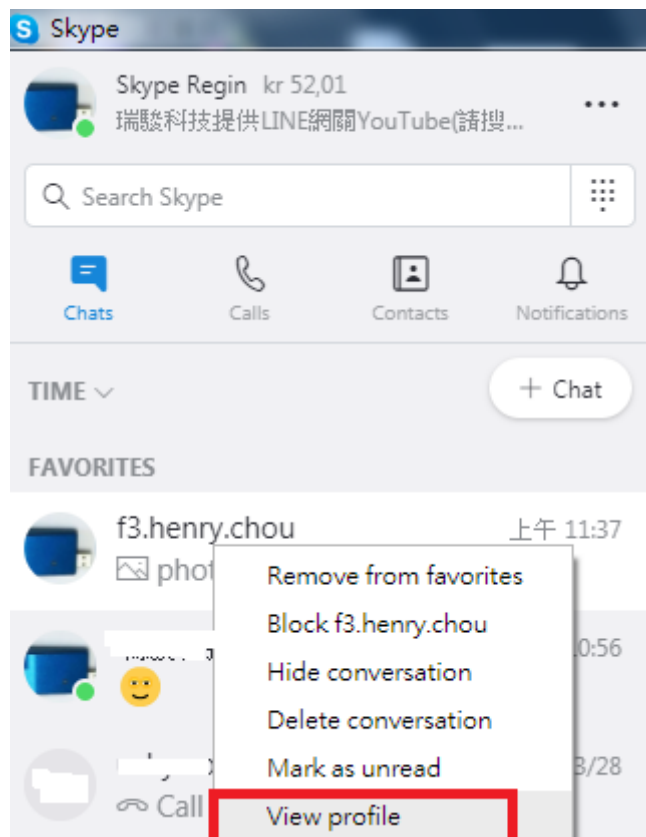
Since Skype doesn't support voice application API, SkyATA needs to control Skype GUI for call out and hang up for application. If user

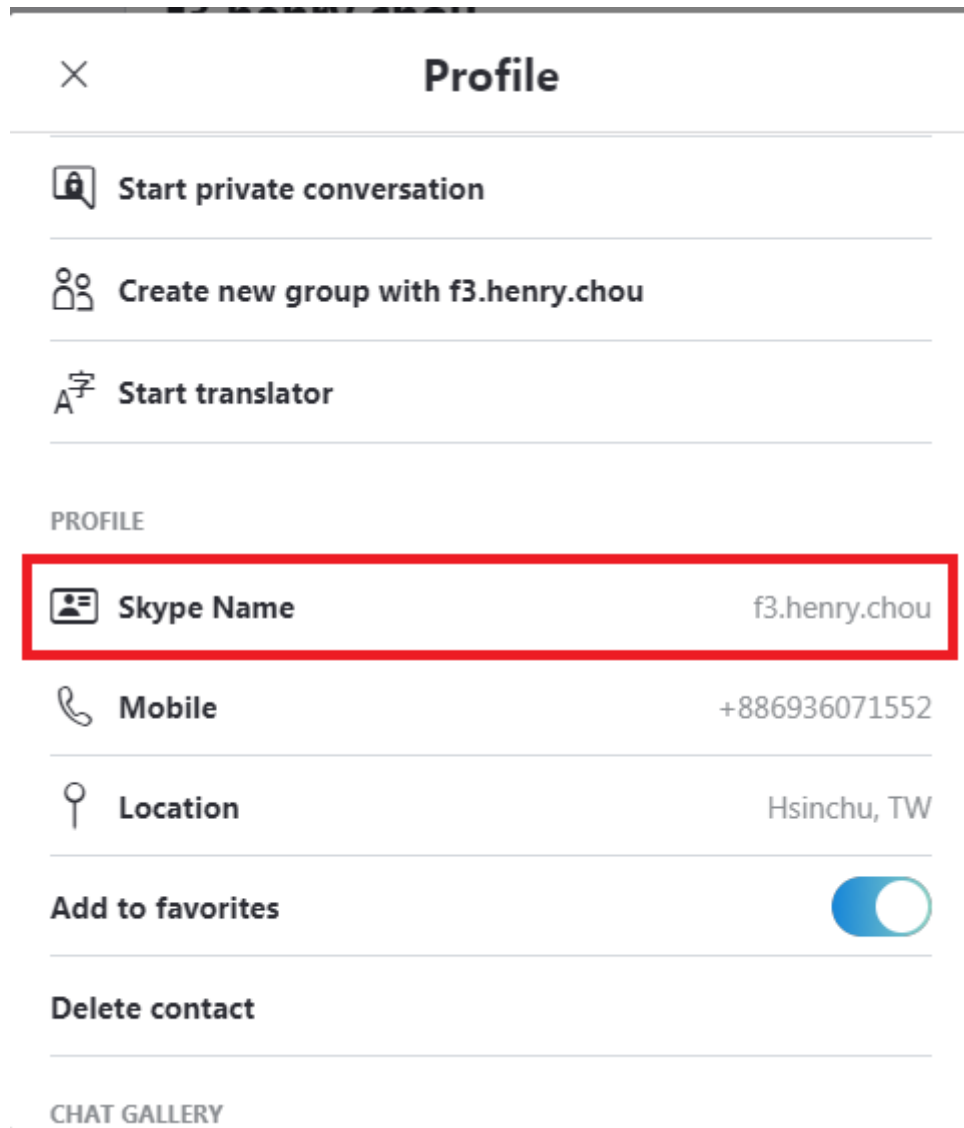
wants to have other application on the SkyATA connecting PC, user needs to prevent interrupting SkyATA's control of Skype GUI when there is callout or hang up activities. Otherwise SkyATA might not work correctly. User can use the computer during the Skype talk, but the calling window can't be closed.

Under Skype 8.x, SkyATA just supports Traditional Chinese, Simplified Chinese and English Skype GUI now. If the setting of Skype Language is not belonged to above three settings, then SkyATA might have the problem to access Skype GUI and shows .

E-mail or mobile phone number Skype account

User needs to fill Skype Name at SkyATA speed dial page for Skype contacts calling out. If the filled in Skype account name format is like e-mail someone@sample.com or mobile phone number, SkyATA can't use such information. As following two figures, user needs to click the Skype contact with right mouse and choose View Profile. Then get contact's Skype Name and fill in SkyATA for application.





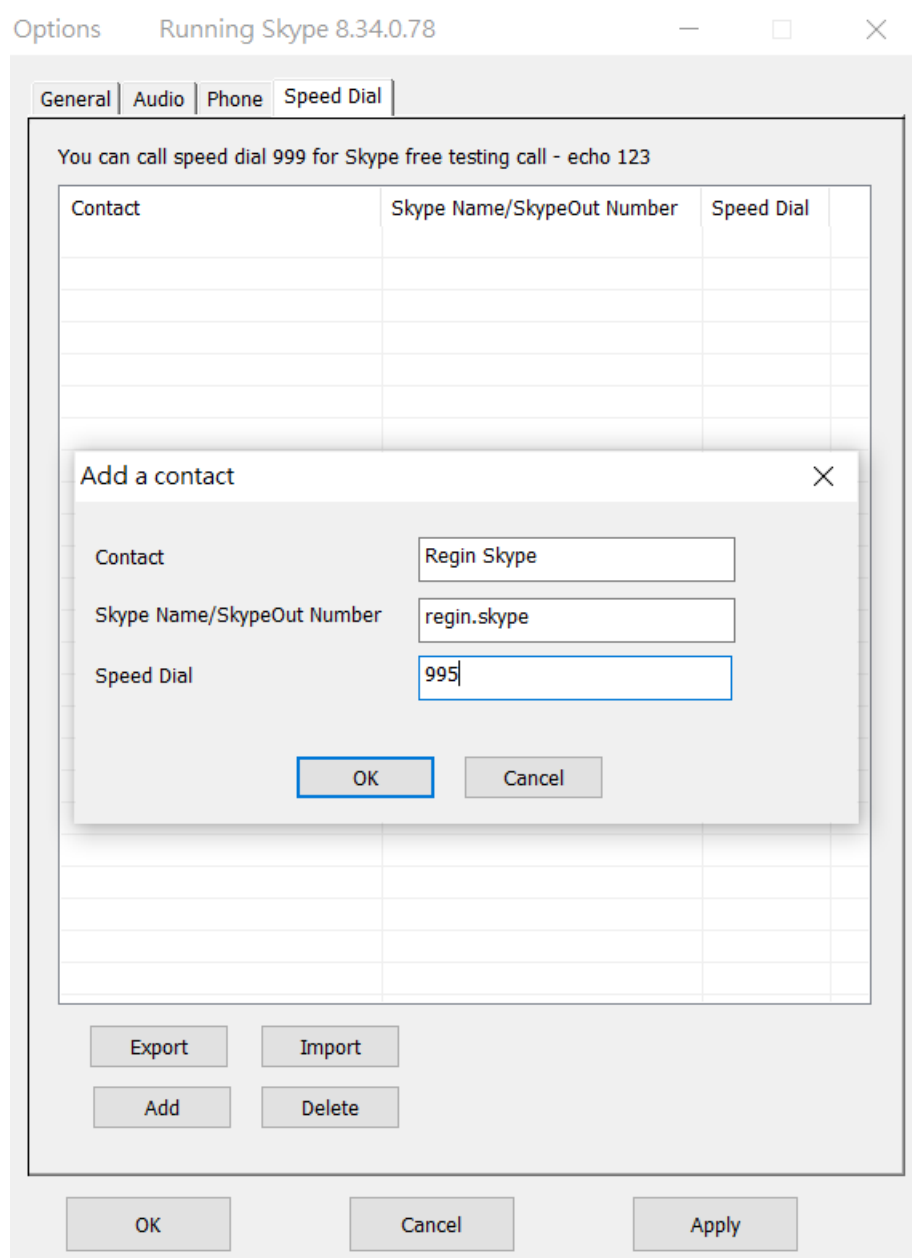
Restart SkyATA PC regularly

Windows PC will become less efficient and slow response. It is good to use Windows task scheduler (Please refer Microsoft link [https://technet.microsoft.com/en-gb/library/cc748993 \(v=ws.11\).aspx](https://technet.microsoft.com/en-gb/library/cc748993 (v=ws.11).aspx)) to arrange a PC restart every two weeks when SkyATA should not be in use.

9. Skype 8.x doesn't have any developer API to get Skype contacts information and our software can't establish Skype contacts for users now.

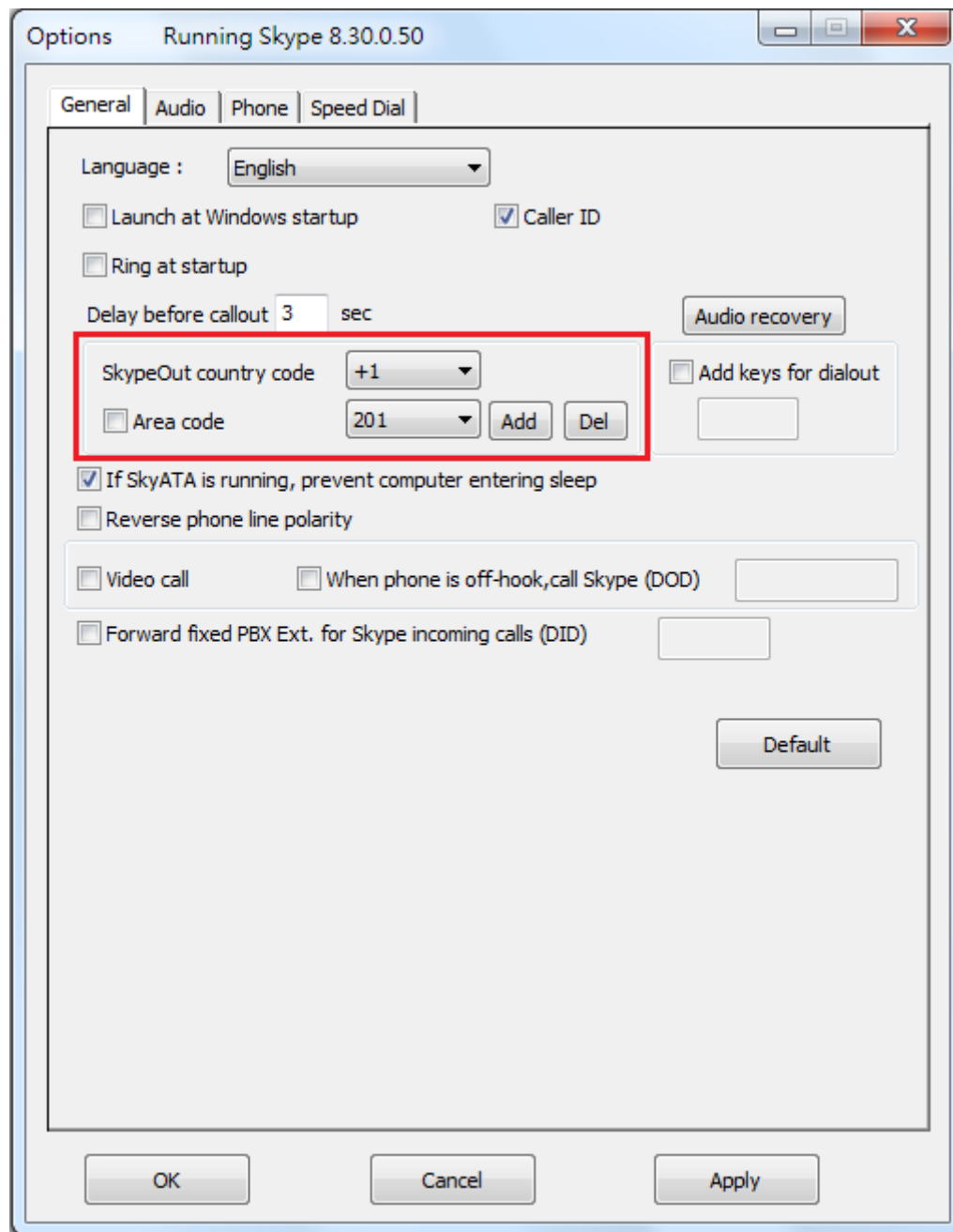
Skype doesn't support speed dial function for version 4.0 and later. User can use SkyATA Speed Dial page to set speed dial for any Skype user or SkypeOut number. There are up to 5 digits for speed dial setting. User needs to upgrade SkyATA version to 3.0.0.9 or later and do the setting at Speed Dial page. Contact is the name for you to distinguish this contact. Skype Name/SkypeOut Number is Skype account name or SkypeOut number for call out. Skype Speed dial list can be exported as back up and

import for use in the future. User can click “Contact”, “Skype Name/SkypeOut Number” or “Speed Dial” individually to have the data arranged in a sequential order for easy finding. If user wants to delete some contacts, user can hold keyboard “ctrl” key and choose all contacts to be deleted, then press’ Delete” button. The selected contacts will be deleted.



10. Pick up your phone receiver or handset and dial Skype contact’s speed dial number + “#” key through the phone keypad after hearing a dial tone and enjoy a Skype call.
11. For a SkypeOut™ call, dial “00” (or “+” key) + country code + local PSTN/Mobile + “#” key through the phone keypad or setup a SkypeOut

contact list and call out by Skype speed dial number. For example, user can make a call to U.S.A. by pressing 00-1-408-888-8888. If SkypeOut country code and area code are set as below figure, user can omit 00 + country code or even area code when making a SkypeOut call.



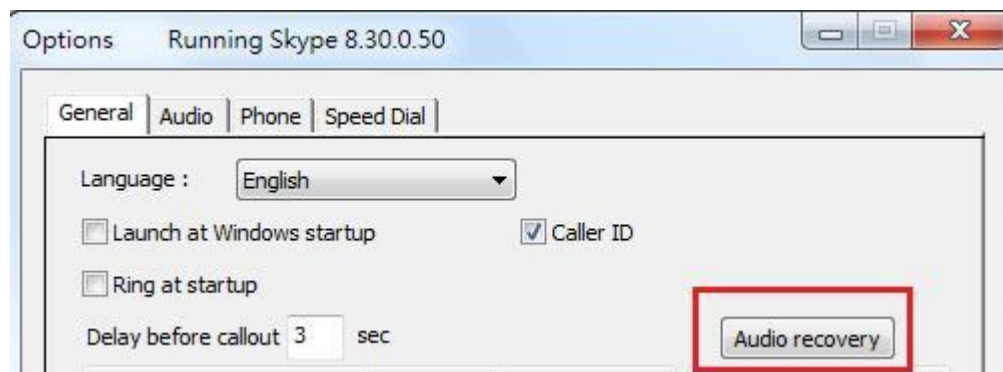
12. When there is an incoming call, pick up your phone receiver or handset to answer the call. Put back your phone receiver or click Hang Up/Reject button to hang up the Skype call.
13. For Skype 7.x or Skype 8.x, SkyATA incoming Skype callers will have problem to dial extension number successfully for a Skype-to-Skype call with SkyATA version before 3.0.0.9. The Skype callers either can't find

DTMF dial pad or dialing DTMF doesn't work. There is no such problem for extension number dialing during SkypeOut calls. For Skype calls from Skype gateway like SkyATA or SkyBox S1, callers can just dial extension number from phone.

SkyATA can support extension dialing during Skype-to-Skype calls via Skype chat after SkyATA version 2.1.0.10 for Skype 7 or version 3.0.0.9 for Skype 8. During Skype-to-Skype calls, Skype callers can send Skype chat message like “*123” 60 seconds before making the Skype call or during the Skype call as below figure. SkyATA software will help the caller to dial extension 123.



14. Sometimes SkyATA call party can't hear each other. It might be due to internet quality. If this problem exists persistently, user can try to click “Audio recovery” button from General page of SkyATA system tray “Options”.



15. **Skype 8.x doesn't support any developer's API, so SkyATA sends Skype display name instead of Skype ID for Skype caller ID now.** If user wants to have speed dial information for the incoming Skype contact for easy call return, user needs to set correct contact's Skype display name and speed dial number at the Speed Dial setting page. User can refer SkyATA user manual 4.8 Skype caller ID for details.

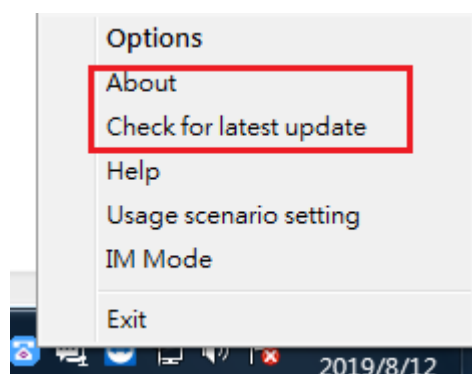
Note:

1. SkyATA setup installation needs to be under user with administrator privilege.
2. SkyATA is quite different with regular USB devices like USB keyboard or mouse. It needs 5V, 500mA power from the USB port. If SkyATA can't work properly after this device is successfully installed, please unplug this device and plug into another PC USB port, or replace the USB cable with a new

good quality one between this device and PC USB port or use USB hub with enough power supply to connect this device and PC USB port.

We found some PC front USB port is extended from motherboard through extension connector/cable and sometimes the connector/cable is at bad quality, it will cause SkyATA to malfunction. For this case, we recommend you to re-plug SkyATA into another USB port or use one USB hub with enough power to connect PC USB port and SkyATA.

3. After SkyATA software is running, user can click SkyATA tray icon with right mouse from right-bottom of PC desktop for “check for latest update” and “about”. About will tell you what’s the SkyATA software version you installed. If the result for check latest update has newer version than your current installation, you can download for use.



Customer support

Regin Technology Corp. LTD.

Web: <https://www.regintech.com.tw>

TEL: 886-3-5735360

FAX: 886-3-5739231

Mobile: 886-936071552

E-mail: henry@regintech.com.tw

Skype: regin.skype

Service hours: 0900~1800 (GMT+08:00 Taipei) office hour

