

SkyBox S1 Quick User Guide

Package Contents

- SkyBox S1 Skype phone saving box
- Type B (A male to B male) USB cable
- Telephone cable
- SkyBox S1 Setup CD: SkyBox S1 Setup program, EN, TC and SC user manual & quick user guide

User can download latest SkyBox S1 related document from Regin Tech web site: <https://www.regintech.com.tw/download.htm>

Quick Installation Procedure

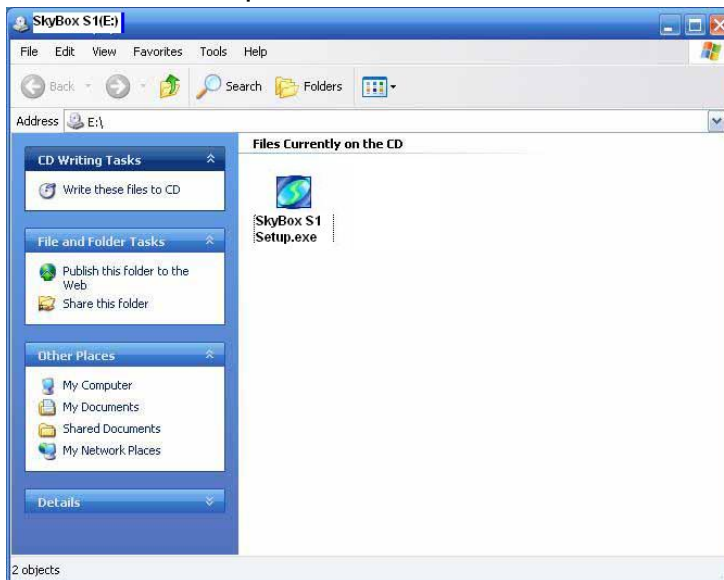
1. Make sure your PC with internet access and running Skype 8.30.0.50 or later version (or Skype version 7.16 or later)
2. Remove SkyBox S1, USB cable, telephone cable and SkyBox S1 setup CD from SkyBox S1 package
3. Connect SkyBox S1 USB port with your computer USB port



4. Connect SkyBox S1 Phone port to one PBX trunk line or a regular analog phone RJ-11 port through telephone cable and make sure phone is on-hook properly
5. Connect SkyBox S1 Line port to your landline(or via RJ11 jack on the wall) through the existing telephone cable



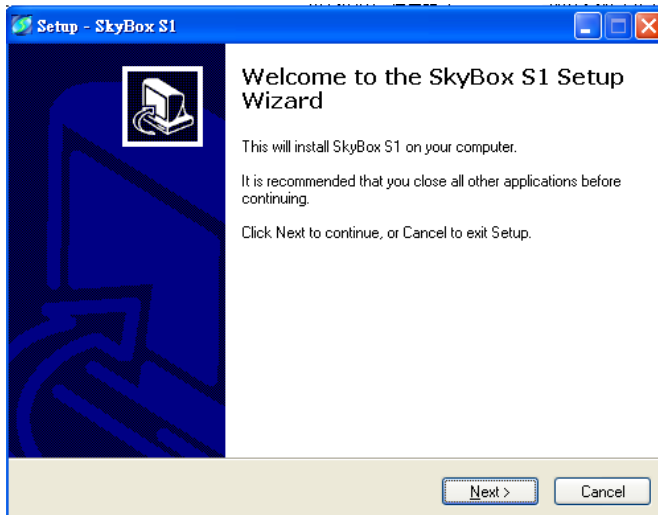
- Put SkyBox S1 setup wizard CD into your computer CD disk and double-click setup.exe.




- The "Select Setup Language" window pops up. Choose a preferred language by scrolling down the selection bar. After choosing the language, click OK.



- The "Welcome to the SkyBox S1 Setup Wizard" appears. Read the on-screen instructions and click Next.

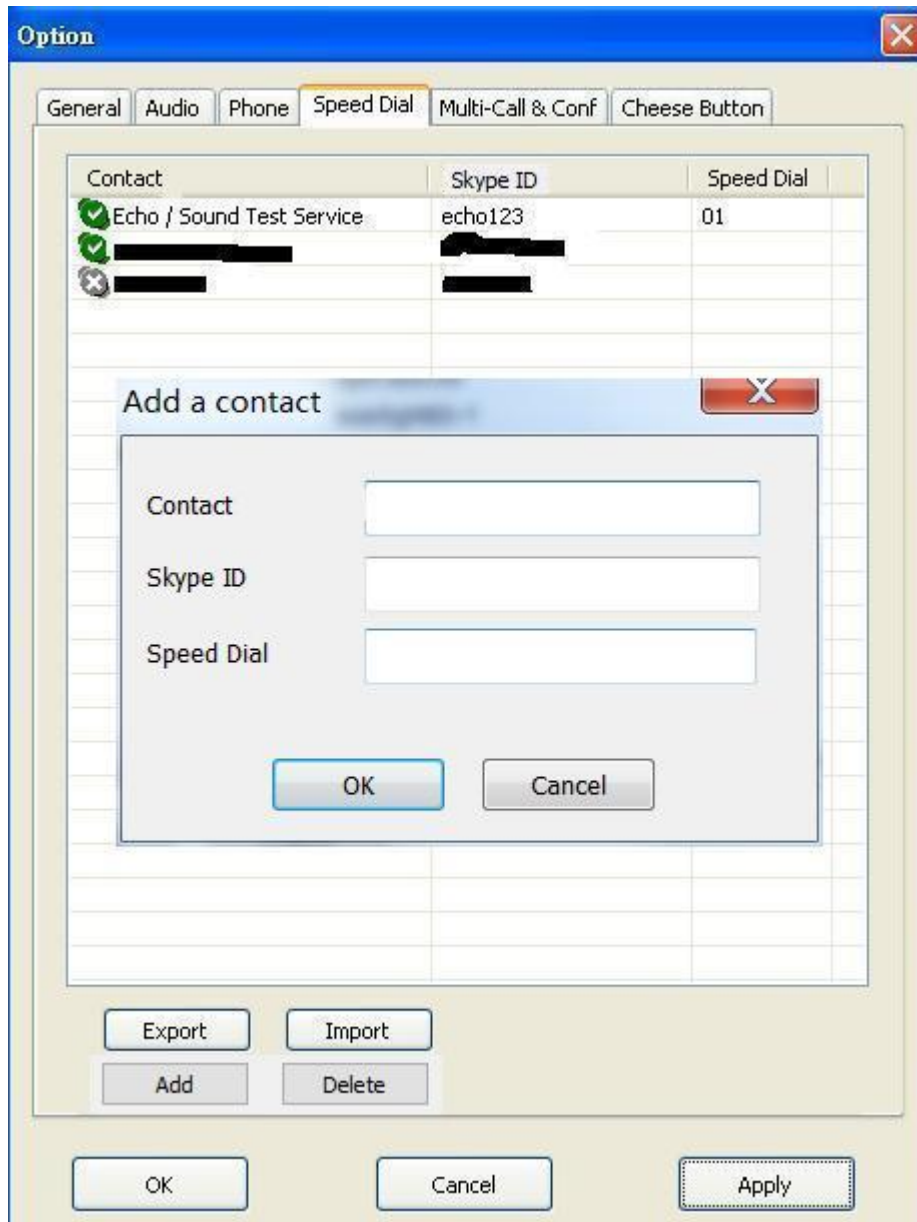


9. SkyBox S1 only supports Skype 8.30.0.50 or later version on English, Traditional Chinese and Simplified Chinese Skype GUI now. If Skype GUI is not set within above three language GUI, SkyBox S1 system tray icon might show Skype unavailable  and device won't work with Skype.

10. **Skype 8.x doesn't have any developer API to get Skype contacts information. We suggest user to login Skype 7.x with latest SkyBox S1 software for all your Skype accounts before October 31, 2018 and use Export function in Speed dial page to keep your Skype accounts contact list for future usage in another PC.**

When SkyBox S1 is running with Skype 8.x and the speed dial page doesn't have your previous contact list, you need to end Skype 8.x and SkyBox S1 and then run SkyBox S1 (version 3.0.0.9 or later) under Skype 7.x. Please ensure all Skype contacts can be found in the speed dial page, then end Skype 7.x and run Skype 8.x with SkyBox S1.

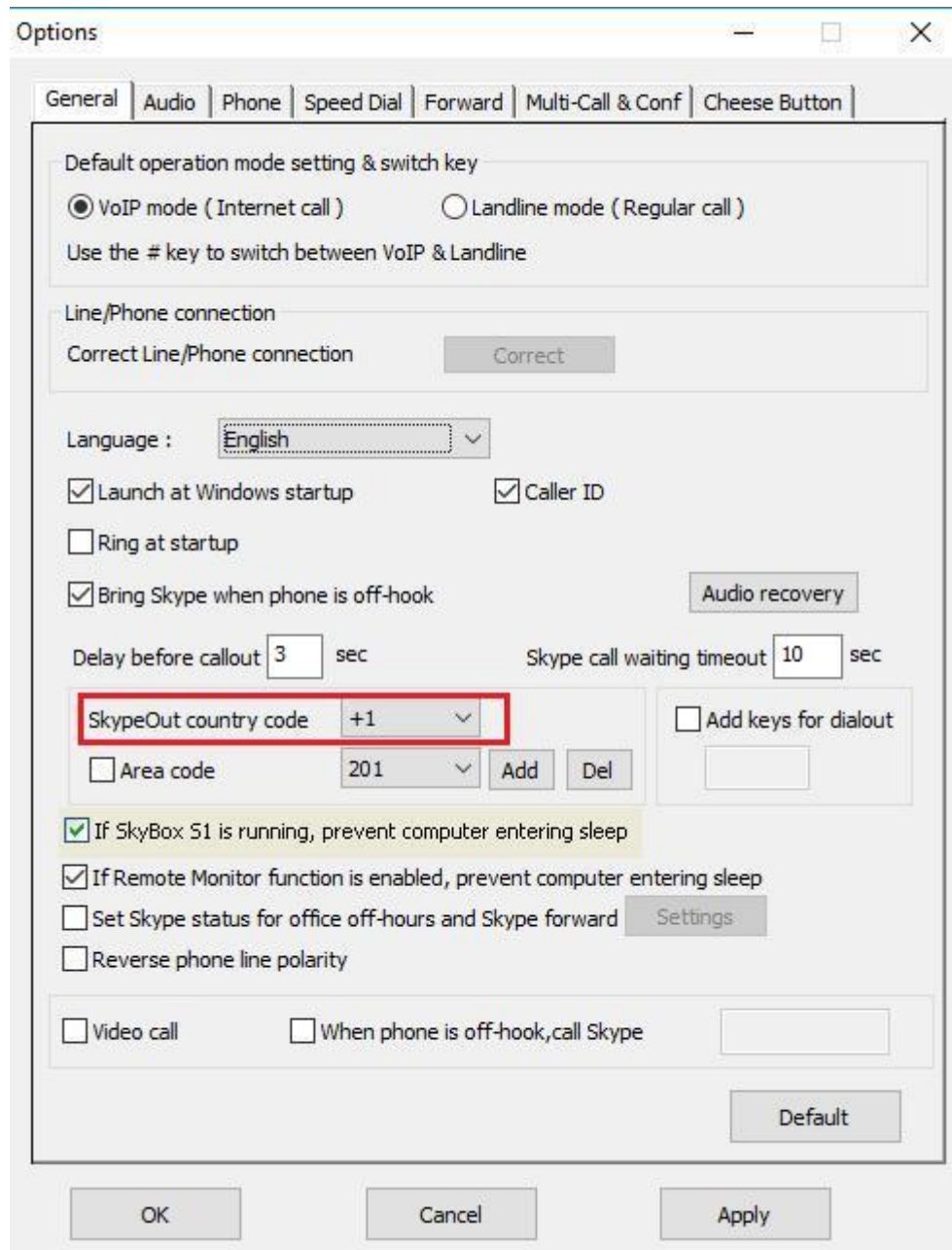
Skype doesn't support speed dial function for version 4.0 and later. User can use SkyBox S1 Speed Dial page to set speed dial for any Skype user or SkypeOut number. There are up to 5 digits for speed dial setting. User needs to upgrade SkyBox S1 version to 3.0.0.9 or later and do the setting at Speed Dial page. Contact is the name for you to distinguish this contact. Skype ID is Skype account or SkypeOut number for call out. Skype Speed dial list can be exported as back up and import for use in the future. User can click "Contact", "Skype ID" or "Speed Dial" individually to have the data arranged in a sequential order for easy finding. If user wants to delete some contacts, user can hold keyboard "ctrl" key and choose all contacts to be deleted, then press 'Delete" button. The selected contacts will be deleted.



11. If the Default operation mode in General tab is VoIP(check from Option dialogue of SkyBox S1 system tray icon in the right-bottom corner of Windows), user will hear a different Skype dial tone and notice blue LED is solid-on when the phone receiver is picked up. User can follow below steps 13~15 to make Skype/SkypeOut calls. Or user can press “# “ key to switch to the Landline mode(Green LED is solid on when the phone is hook off) and hear a familiar landline dial tone, then make a landline call as you did in the past. If user changes default operation mode as Landline mode, user will hear a familiar landline dial tone and notice green LED is solid-on when the phone receiver is picked up. Then make a landline call as you did in the past. User can press “# “ key to switch to the VoIP mode and hear a different Skype dial tone and notice blue LED is solid-on when

the phone receiver is picked up. User can follow below steps 13~15 to make Skype/SkypeOut calls.

12. When SkyBox S1 is in the VoIP mode, pick up your phone receiver or handset(blue LED is solid-on) and dial Skype contact's speed dial number + "# " key through the phone keypad after hearing a Skype dial tone and then enjoy a Skype call. Add " # " key will accelerate the Skype call to be calling out, but it is not necessary.
13. For a SkypeOut™ call, dial "00" (or "+" key) + country code + phone number + "# " key through the phone keypad or setup a SkypeOut contact list and call out by Skype speed dial number. Add " # " key will accelerate the SkypeOut call to be calling out, but it is not necessary. For example, user can make a call to one U.S.A. number by pressing 00-1-408-888-8888. If SkypeOut country code and area code are set as below figure, user can omit 00 + country code or even area code when making a SkypeOut call.



14. When there is a phone ring for an incoming call, pick up your phone receiver or handset to answer the call and hang up phone or click End call from Skype GUI to finish the call.
15. For Skype 7.x or Skype 8.x, SkyBox S1 incoming Skype callers will have problem to dial extension number successfully for a Skype-to-Skype call with Sky SkyBox S1 version before 3.0.0.9. The Skype callers either can't find DTMF dial pad or dialing DTMF doesn't work. There is no such problem for extension number dialing during SkypeOut calls. For Skype calls from Skype gateway like SkyBox S1 or SkyATA, callers can just dial extension number from phone.
SkyBox S1 can support extension dialing during Skype-to-Skype calls via Skype chat after SkyBox S1 version 2.1.0.152 for Skype 7 or version 3.0.0.9 for Skype 8. During Skype-to-Skype calls, Skype callers can send

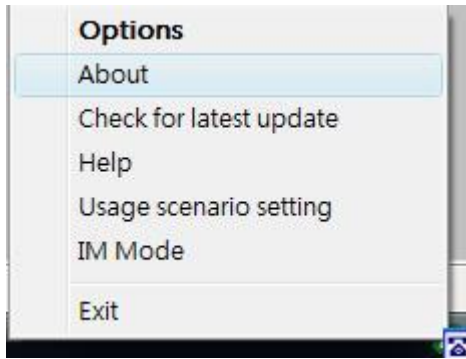
Skype chat message like “* 123” 30 seconds before making the Skype call or during the Skype call as below figure. SkyBox S1 software will help the caller to dial extension 123.



16. During a Skype or a landline call, user can press “* 1” phone keys to pick up the interrupt landline or Skype call and switch between both calls. Press “*” phone key to hang up the current call.
17. During a Skype or a landline call, user can press “* 2” phone keys to add the interrupt landline or Skype call for a 3 way conference(one landline and one Skype).

Note:

1. SkyBox S1 setup installation needs to be under user with administrator privilege.
2. SkyBox S1 is quite different with general USB devices like USB keyboard or USB mouse. It needs 5V, 500mA power from the USB port. If SkyBox S1 can't work properly after this device is successfully installed, please unplug this device and plug into another PC USB port, or replace the USB cable with a new good quality one between this device and PC USB port or use USB hub with power adapter to connect this device and PC USB port.
We found some PC USB port at the front panel is extended from motherboard through extension connector/cable and sometimes the connector/cable is at bad quality. It might cause SkyBox S1 to malfunction. For this case, we recommend you to plug SkyBox S1 into USB ports at PC rear panel or use one USB hub with power adapter to connect PC USB port and SkyBox S1.
3. After SkyBox S1 software is running, user can click SkyBox S1 tray icon with right mouse from right-bottom of PC desktop for “check for latest update” and “about”. About will tell you what’s the SkyBox S1 software version you installed. If the result for check latest update has newer version than your current installation, you can download for use.



Customer support service

Regin Technology Corp. LTD.

TEL: 886-3-5735360

FAX: 886-3-5739231

Mobile: 886-936071552

E-mail: henry@regintech.com.tw

Skype: [regin.skype](https://www.skype.com/name/regin.skype)

<https://www.regintech.com.tw>

Service hours: 0900~1800 (GMT+08:00 Taipei) office hour

